



Building Bright Tomorrows...Today

Fall/Winter 2014



The Value of Early Intervention, Prevention & Education Programs



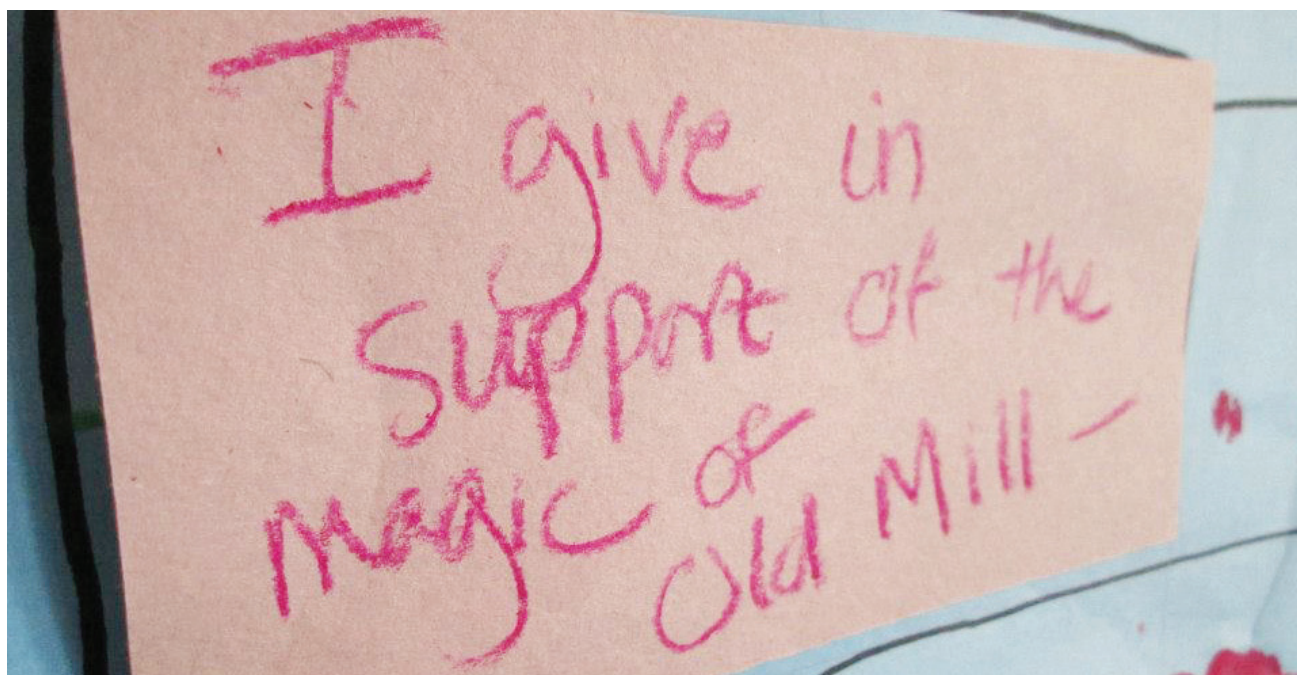
Collaborative studies between the Centers for Disease Control and Prevention and Kaiser Permanente's Health Appraisal Clinic in San Diego, laid the foundation for many of the strategic investments in prevention and early intervention for children experiencing what researchers call Adverse Childhood Experiences (ACE). Researchers in the ACE Studies found a direct link between childhood trauma, abuse, neglect, family dysfunction and the onset of adult medical, mental and social problems (including doing time in prison and work issues such as absenteeism). Almost sixty-four percent of study participants had experienced at least one of the ten identifiable ACEs and 22% had experienced three

or more. Those with four or more categories had increased odds of learning or behavior problems in school, as much as thirty-two times as high as children with no adverse childhood experiences. Abuse and neglect make up five of the ACEs.

Unfortunately, children in Linn and Benton counties continue to be victims of abuse and neglect. In 2013, 126 children in Benton County were victims—a rate of 8.5 per 1,000 children—and Linn County had 487 victims—a rate of 17.3 per 1,000. (Source: 2013 Child Welfare Data Book, Oregon Department of Human Services)

—Continued P3

"We all know that child maltreatment does exist in Benton County. As providers who care about our children, Old Mill Center and our partner agencies are working hard to prevent such maltreatment." - Bev Larson, co-founder of Old Mill Center



Straight from the Director

At a recent Old Mill Center event a supporter wrote, "I give in support of the magic of Old Mill." This is an amazing way to describe what can happen when we believe that children and families can thrive if given a helping hand and appropriate support.

Magic is an integral part of what we do. We add to it evidence based services for our education and therapy programs, good business practices and an open heart and mind. Our work continues as long as there are children in need. We are proud to serve this community and thank you for helping us create a village that nurtures the children we work with. They are our future!

—Bettina Schempf, Executive Director

News and Updates

New Development Manager



Kate Caldwell has joined Old Mill Center as our new Development Manager. She comes to us with forty years of experience in hospitality and event planning. She recently finished two years as an AmeriCorps/VISTA volunteer and was hoping to find a local organization that focuses on children and families. Working with us gives her a chance to continue serving on a local level, and to help change lives for a better future.

Caldwell says she is especially inspired by the fact that we continue to pursue the dreams of our founders, while growing and serving an even wider population than originally planned.

Kate Caldwell can be reached at 541.757.8068 x 144 or kate_caldwell@oldmillcenter.org.

Old Mill Center Expands Services

We are excited to announce an expansion of our services! Our Healthy Families program has taken over management of the Healthy Families program in Linn County for 2014–2015. We contract the delivery of this important program to the Linn County Health Department, who previously managed it in-house.

We are now able to provide adult counseling in our Child and Family Counseling Program. This will allow us to continue our focus not just on children, but the family as a whole system. Together we can build a strong foundation for future generations.



Cob Camp Wrap-Up

After three weeks of dirty feet and mud covered hands, we said goodbye to the young participants of our first ever Therapeutic Cob Camp. The cob project was one of those rare opportunities to provide a unique experience in addition to other daily therapeutic and creative activities. This summer camp was designed to involve all kids in a positive, uplifting and skill-building experience while helping them heal and have fun.

The kids were able to accomplish quite a bit on the cob structure and even created unique art to make it stand out. To complete the project, we received much needed additional hands from all over the community during our weekly cob building workshops.

Thank you to everyone who made this special and therapeutic experience possible for the youth of our community!

OLD MILL CENTER FOR CHILDREN & FAMILIES

PRESCHOOL

Enrolling Now!

AGES 3 - 5

8AM - NOON

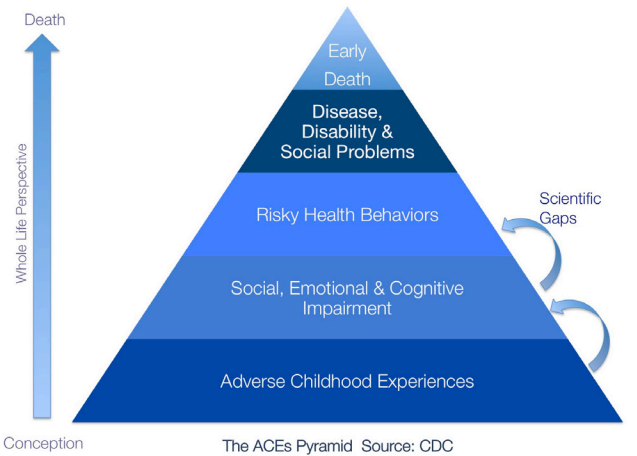
Early Intervention, Prevention & Education

—Continued from P1
Early investments in prevention, intervention and early education programs improve the lives of the children and families they serve by helping curb the occurrence and impact of childhood trauma on local families, economies and communities. They also curtail the large costs incurred if no help is offered to those affected by adverse childhood experiences. A recent article by the Huffington Post broke down the **lifetime costs of inaction for one child:**

Childhood healthcare costs	\$ 32,648
Adult medical costs	\$ 10,530
Productivity losses	\$144,360
Criminal justice costs	\$ 6,747
Special education costs	\$ 7,999
TOTAL	\$202,104

When we apply that calculation to the 126 children affected by reported abuse and neglect in 2013 in Benton County alone, the costs are staggering.

Preventative programs like Healthy Families and the Relief Nursery cost \$1,600 to \$7,000 a year per family served. They not only reduce the risk of child abuse and neglect, they also help parents seek help for their own struggles with domestic violence, substance abuse, mental illness, family conflict and other family challenges.



Anyone can help children by investing in early prevention and education programs. The greatest benefit goes to those children who are most at risk, however the programs benefit everyone. According to Dr. James Heckman, Nobel laureate in Economics, “...early learning and intervention programs for disadvantaged children raise the quality of the workforce, enhance the productivity of schools and reduce crime, teenage pregnancy, and welfare dependency. They raise earnings and social attachment.”

Quality early learning programs can reduce the costs of special education, remedial classes and incarceration, thus reducing tax dollars the community spends on those services. Every dollar our community invests in the health and well-being of children in need, is multiplied exponentially in the future. Taxpayers can save up to \$13.00 in future costs for every dollar invested in quality early care and education, according to the MIT report Early Childhood Education for All: A Wise Investment. Implementing prevention, intervention and education programs as early as possible, are tools we can use to improve the personal well-being of local families in crisis, as well as the economic health of our community.

This sound financial sense is just one of the many reasons Old Mill Center’s staff, volunteers, donors and advocates work together to offer a spectrum of services that meet the needs of any and every family in need. Old Mill Center provides strategies in prevention, intervention, and education for both children and their parents. We focus not only on the child but the family as a whole, ending negative cycles and reducing the number of children exposed to early childhood ACEs, now and for future generations. We ask you, our community to support this work with your investment. As long as there is a need, we will be there.

In the 2013–2014 year, Old Mill Center performed over 1,000 home visits through the Relief Nursery, Healthy Families and Integrated Preschool.



The Year in Review

The Annual Report for 2013-2014 is now available! Yes, it is full of facts and figures, but it also tells the story of our mission—helping children and their families to maximize their potential. We have impacted many families’ lives and you will meet a couple of them in this years’ Annual Report. Equally as important, the report gives us an opportunity to shine a spotlight on our supporters.

We thank every single volunteer for their hours of devoted work. We thank our sponsors, grantors, and every single donor who gave. Our work is made possible through these commitments. You are our foundation and we thank you all! For a copy of the report, contact: kate_caldwell@oldmillcenter.org or find an electronic version on our website at www.oldmillcenter.org/?p=1241

39%

of all child abuse cases occur in the first four years.

A good home visiting program can cut this number in half.

Pew Center on the States, 2012

Taylor Family

Tiffany went through a very difficult divorce and was struggling to find ways to support her children through this process. She joined our Relief Nursery Parent Group and credits this group with helping her make it through the week sometimes. She also receives home visits and has regular sessions through Child and Family Counseling. With the help of these services Tiffany and her two children Charlie and Jill, are building a strong family foundation that will last them a lifetime. Tiffany is doing the hard work necessary to rebuild her life and support her children on her own.

Old Mill Center helps her family thrive not with one program alone, but as an organization with a spectrum of services that work together for the family as a whole.

Thank you for supporting Old Mill Center!

Skinny Pig Out

The Skinny Pig Out is our annual event to honor the volunteers and donors who give so much to our work all year long. It's an unusual name, but legendary around here. The event is named in honor of Skinny Larson, mother of co-founder Bev Larson. Skinny devoted twenty-eight years of nearly full-time volunteering for us. She was a true believer in the magic of Old Mill Center. This year's Skinny Pig Out was held on September 14th and featured two very moving testimonials from Old Mill Center families, as well as a retrospective on Skinny's legacy presented by her daughter, George Cuniff.

A thank you goes to Powell Construction for sponsoring the event and to Dale Ramsay, Market of Choice and Greengable Farm for helping to make it a great success. We are so grateful for all of the giving...it is the foundation of our work.

WishList

Professional camera	Socks and underwear
Etch-a-Sketch	Rain boots (toddler-11)
High efficiency, low energy computers	Waterproof clock
Pedal-free bike	Gift cards (for book stores, craft stores etc.)
Dawn dish soap	
Paper (all kinds!)	
Glue (sticks & liquid)	
General art supplies	
Quality art supplies	
Working vacuum	
Bingo daubers	

**For an expanded list and other ways to give please visit our website!*

you are wonderful!

Upcoming Events

Pictures with Santa!

**Saturday Nov. 22nd, 2014
8:30AM - 3PM**

Haugen's Galleri is bringing the studio to Old Mill Center! Picture packages range from \$19 - \$149.



Holiday Families Gift Drive

Beginning the middle of November our Holiday Families program will begin again!



Save the Date!

**Old Mill Center's
35th Annual Auction
May 2nd, 2015**



Thank you for supporting summer programs!

Benton County Foundation
Cob Cottage Company
Corvallis Rentals Inc
Del's Feed and Farm Supply
Green and White Rock Products
Greengable Farm
Good Earth Pest Company
Benton Habitat for Humanity ReStore
Corvallis Home Depot
Jackson Luck Enterprises
Mid-Valley Gravel
PCC Welding Club
Sweeney Pond Farms
Tyson Corcoran of Kerr Contractors

Board of Directors

2014-2015

Brenda Coleman, Chair
Educator/ Social Worker

George Cuniff, Vice-Chair
Quiltwork Patches

Dale Ramsay, Treasurer
Contractor (Retired)

Bronwyn Evans, Secretary
Edward Jones

Lindsay Briggs
Smith, Davison & Brasier, PC

Tatiana Dierwechter
Benton County

Pat Dixon
Business Owner (Retired)

Cyrel Gable
LBCC

Dennis Hanson
Attorney

Sid Lasswell
CH2M Hill (Retired)

Jim Starker
Investments

Tammy Todorovich
Town & Country Realty

Dr. Veneta Vanguelova
Corvallis Clinic

Dr. Jim Van Olst
Orthopedic Surgeon (Retired)

Bobbie Weber, PhD
Oregon State University



☎ 541.757.8068 🌐 www.oldmillcenter.org
📍 1650 SW 45th Place Corvallis, OR 97333